

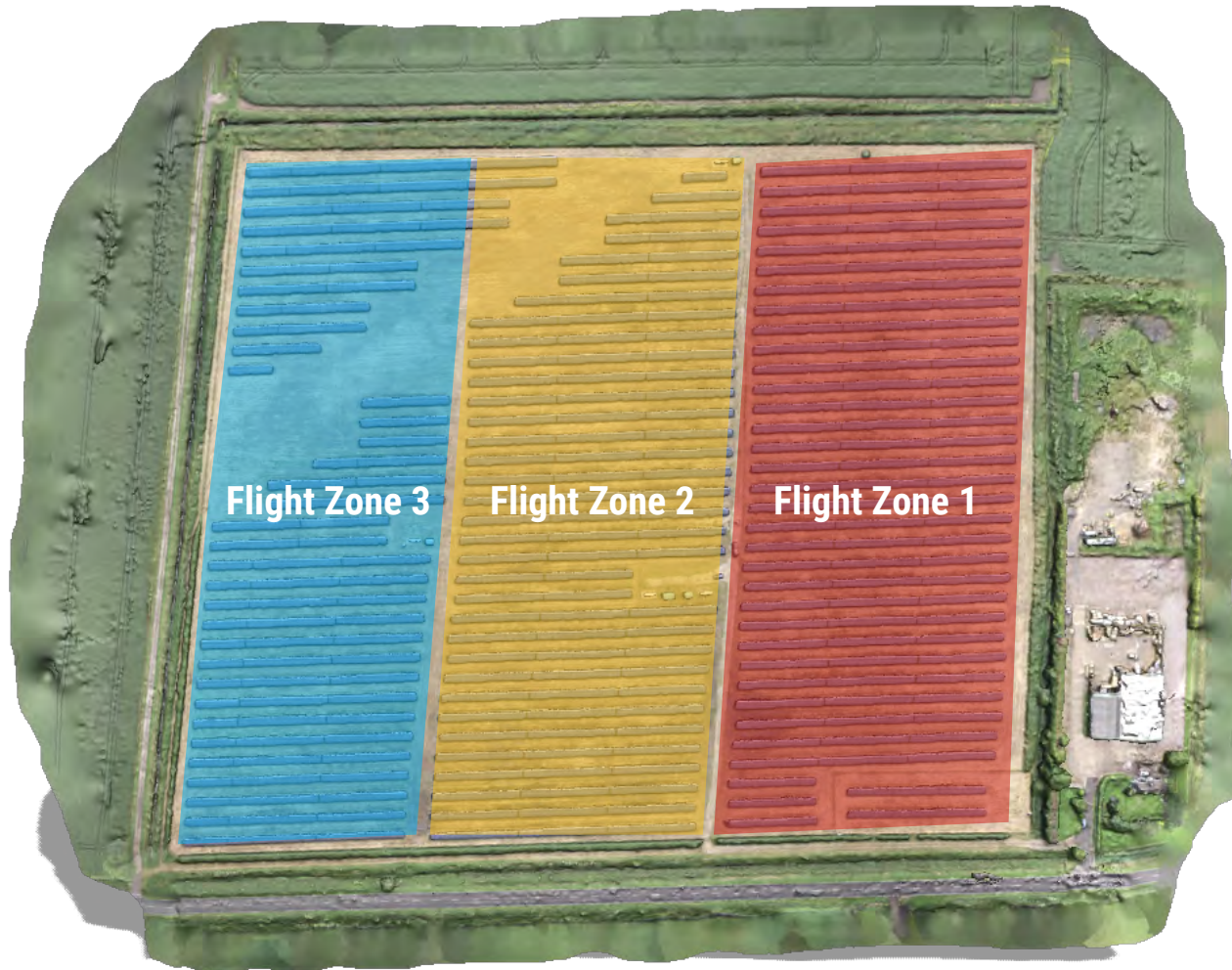


**iRed Ltd**  
Unit 6, The Old Flour Mill,  
Queen Street, Emsworth,  
Hampshire, PO10 7BT

**Contact Us**  
01243 370 296  
[www.ired.co.uk](http://www.ired.co.uk)  
[admin@ired.co.uk](mailto:admin@ired.co.uk)

<b>Site Plans</b>	<b>3</b>
<b>Zone Overview</b>	<b>4</b>
<b>Thermal Overview</b>	<b>5</b>
Zone 1 - Anomaly 2 (Row 19 - Module 7 Lower)	6
Zone 1 - Anomaly 7 (Row 6 - Modules 58-76)	7
Zone 3 - Anomaly 2 (Row 85 - Module 50 Lower)	8



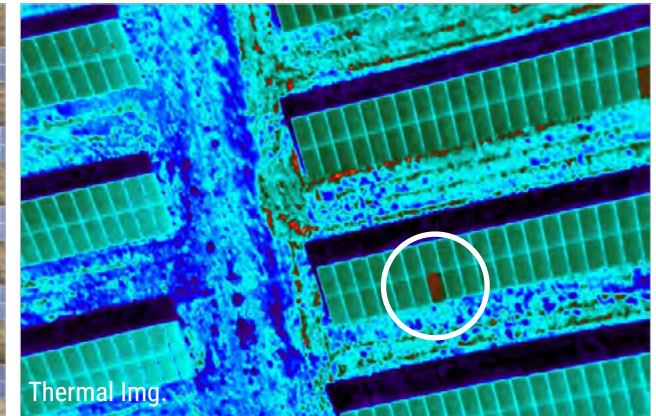


The site was divided arbitrarily into distinct flight zones for undertaking the aerial inspection. Each flight was conducted consecutively on the same day, however a short maintenance gap between each flight was necessary for fuel cell replacement and image backup.

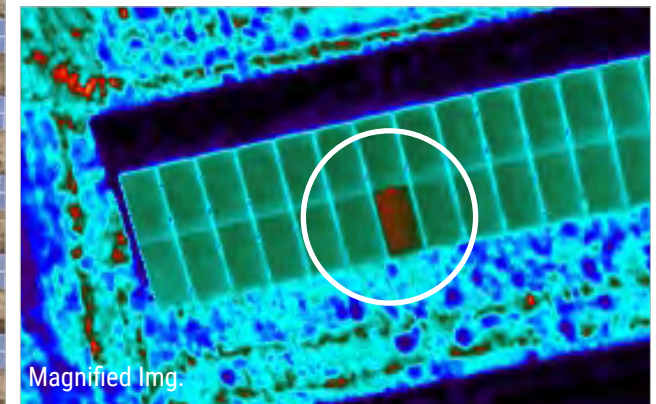




Overlay Img.



Thermal Img.



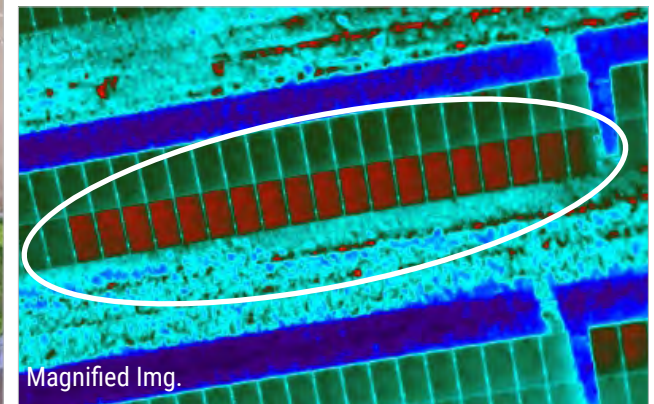
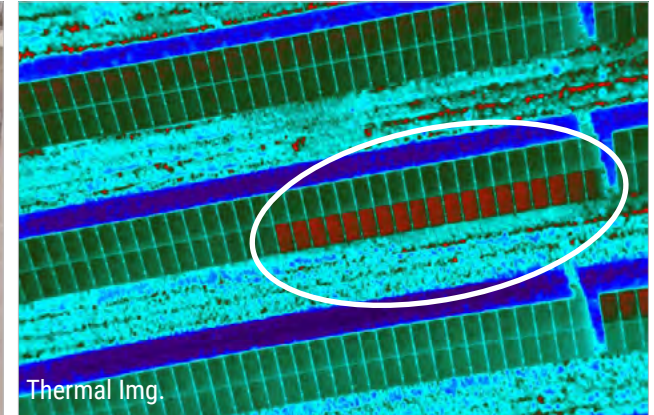
Magnified Img.

Panel ID:	N/A
Camera:	IR8000
Calibration:	06/06/16
Img No.:	0016
Time:	11:16am

Air Temp:	26°C
Cloud Cover:	0%
Irradiance:	680 W/m <sup>2</sup>
Wind Direction:	SW
Wind Speed:	1.5-2m/s

Engineer Observations:
N/A

Remedial Action Taken
Date: _____ Signed: _____

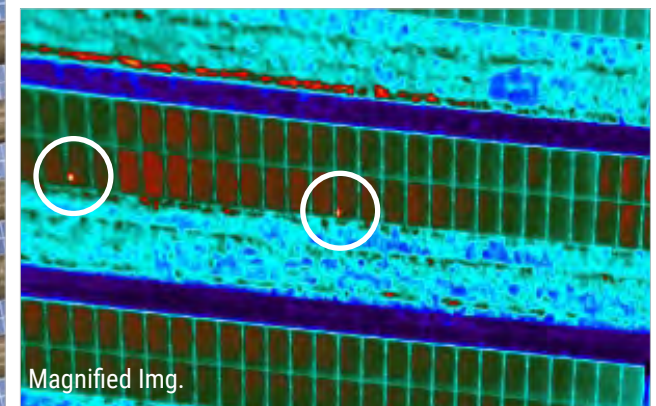
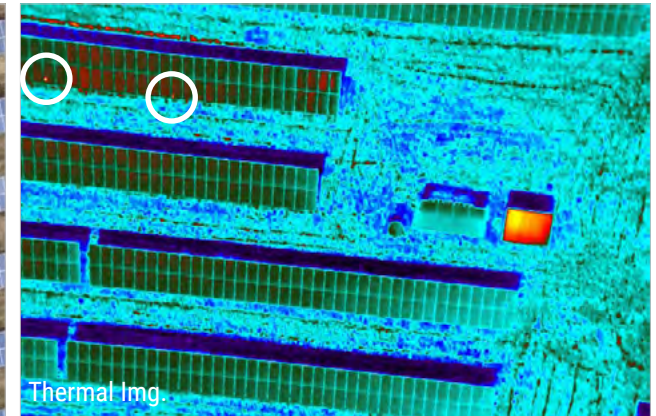
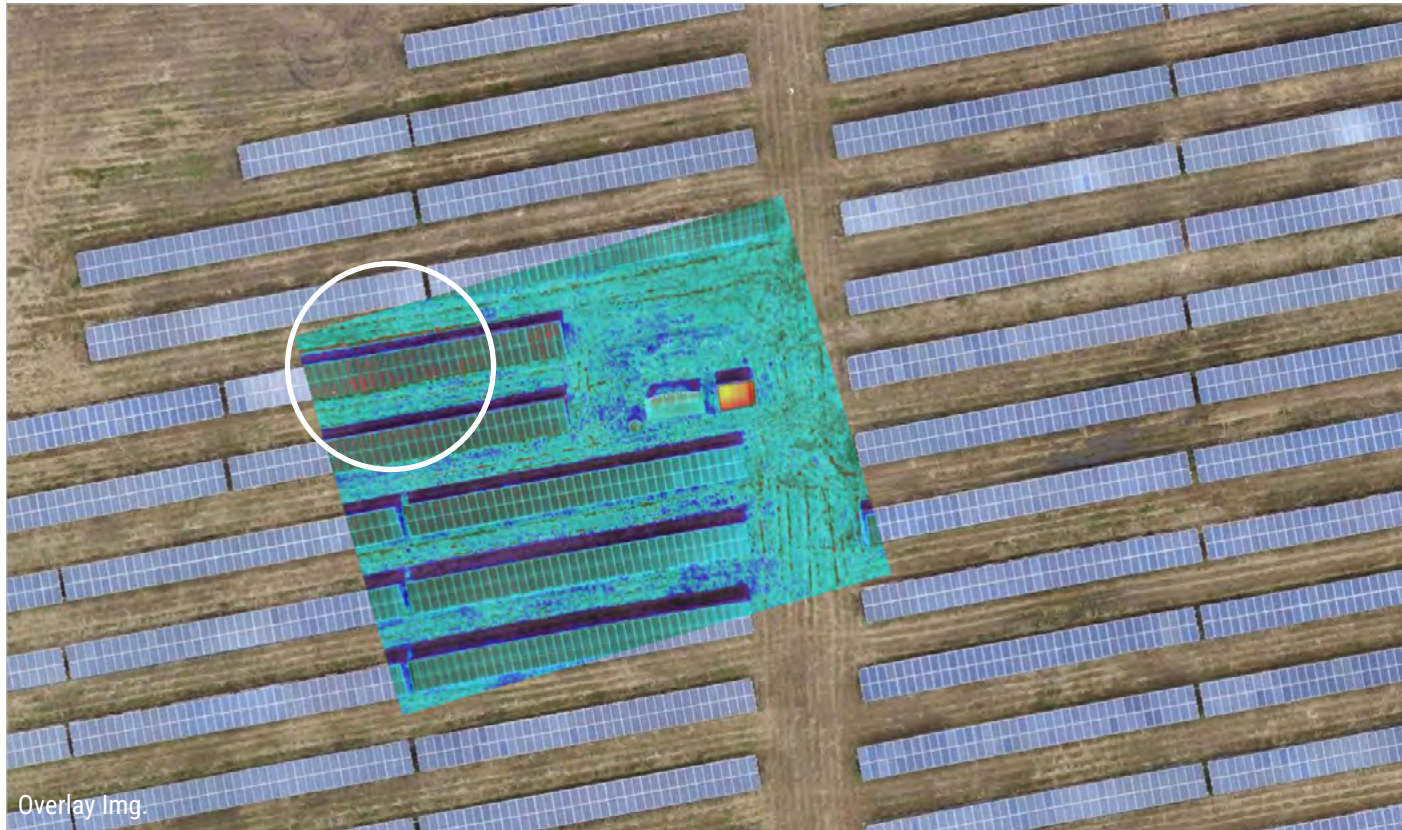


Panel ID:	N/A
Camera:	IR8000
Calibration:	06/06/16
Img No.	0052
Time:	11:17am

Air Temp:	26°C
Cloud Cover:	0%
Irradiance:	680 W/m <sup>2</sup>
Wind Direction:	SW
Wind Speed:	1.5-2m/s

Engineer Observations:
N/A

Remedial Action Taken
Date: _____ Signed: _____



Panel ID:	N/A
Camera:	IR8000
Calibration:	06/06/16
Img No.	0010
Time:	12:36pm

Air Temp:	17°C
Cloud Cover:	2%
Irradiance:	1070 W/m <sup>2</sup>
Wind Direction:	SW
Wind Speed:	1.5-2m/s

Engineer Observations:
N/A

Remedial Action Taken
Date: _____ Signed: _____